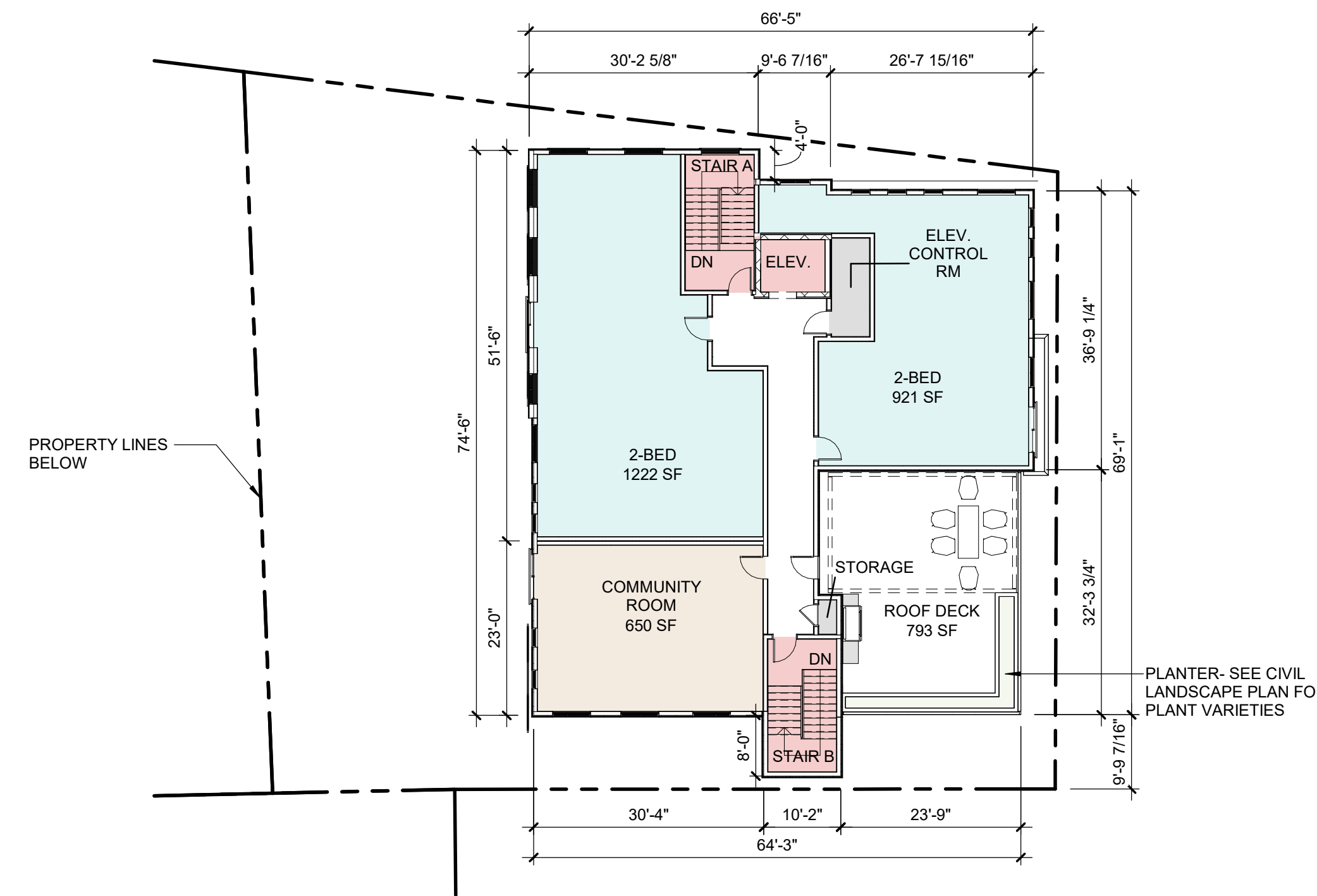
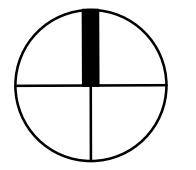


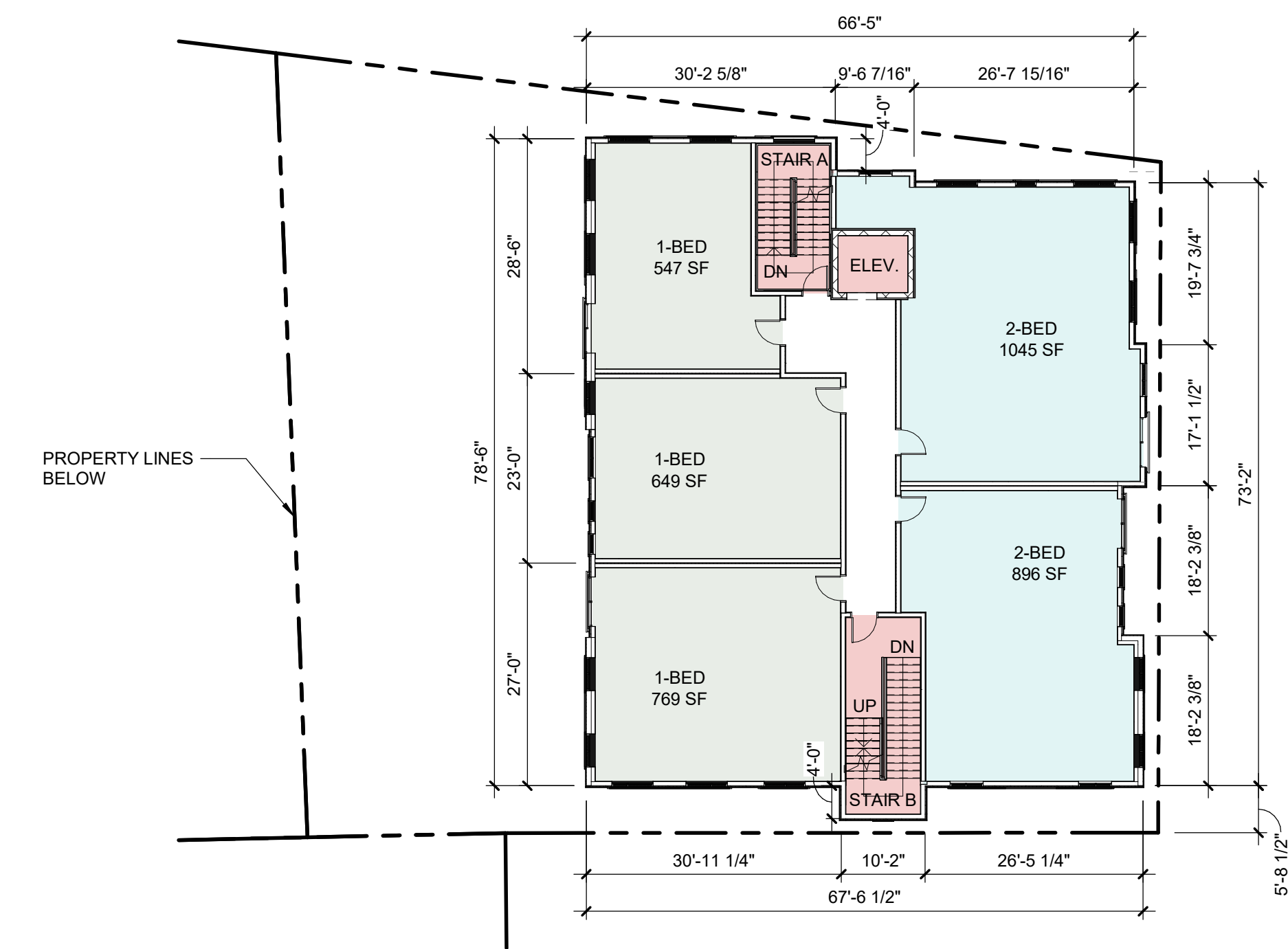
BUILDING BREAKDOWN:					
	1ST	2ND	3RD	4TH	TOTAL
1-BED	0	3	4	0	7
2-BED	0	2	1	2	5
TOTAL	0	5	5	2	12
GSF	1,468	4,550	4,349	3,506	13,873

PARKING BREAKDOWN:	
STANDARD	5 (2 EV)
COMPACT	6
ACCESSIBLE	1 VAN (EV)
TOTAL	12

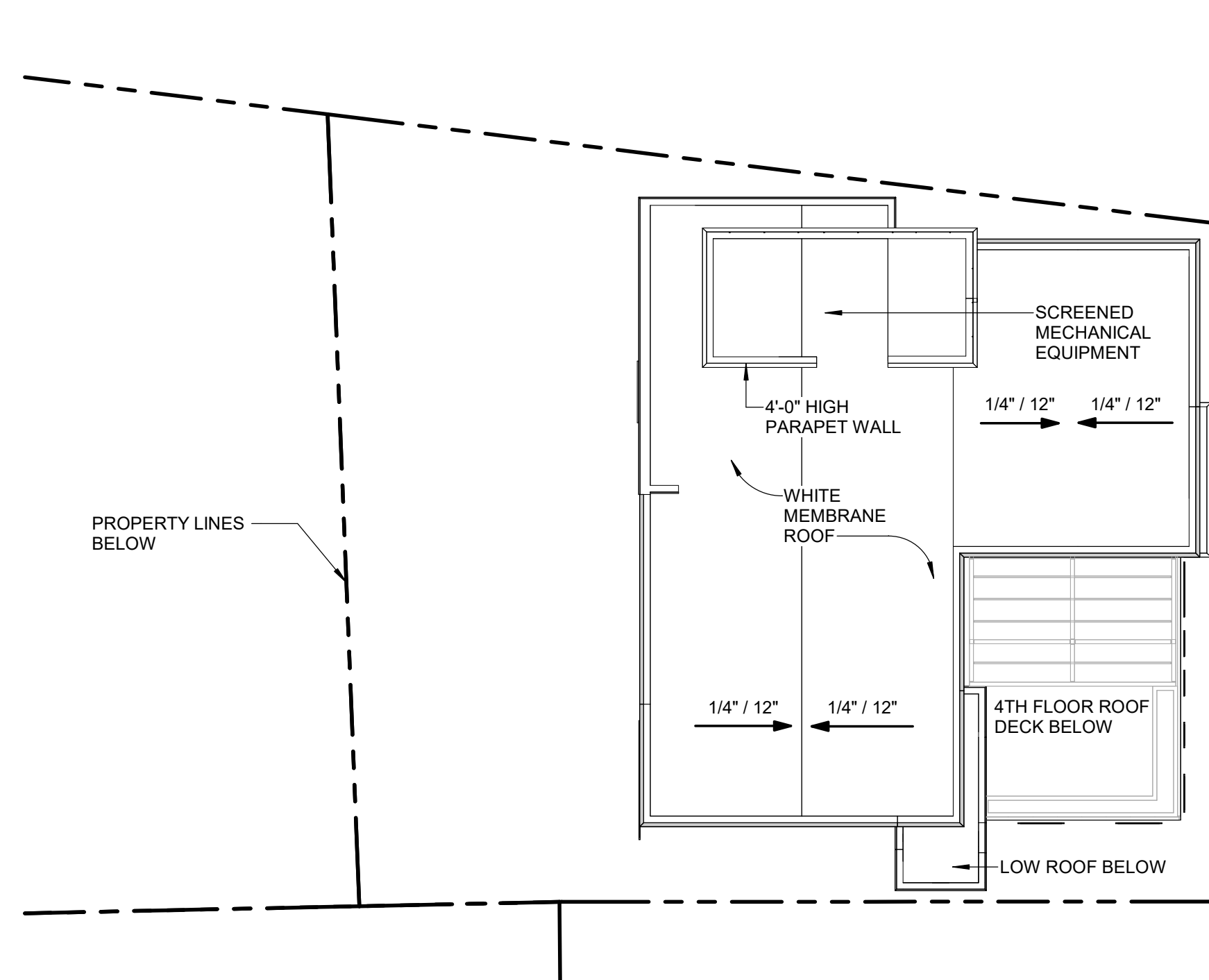
BICYCLE BREAKDOWN:	
INTERIOR/SECURE	12
EXTERIOR	0
TOTAL	12



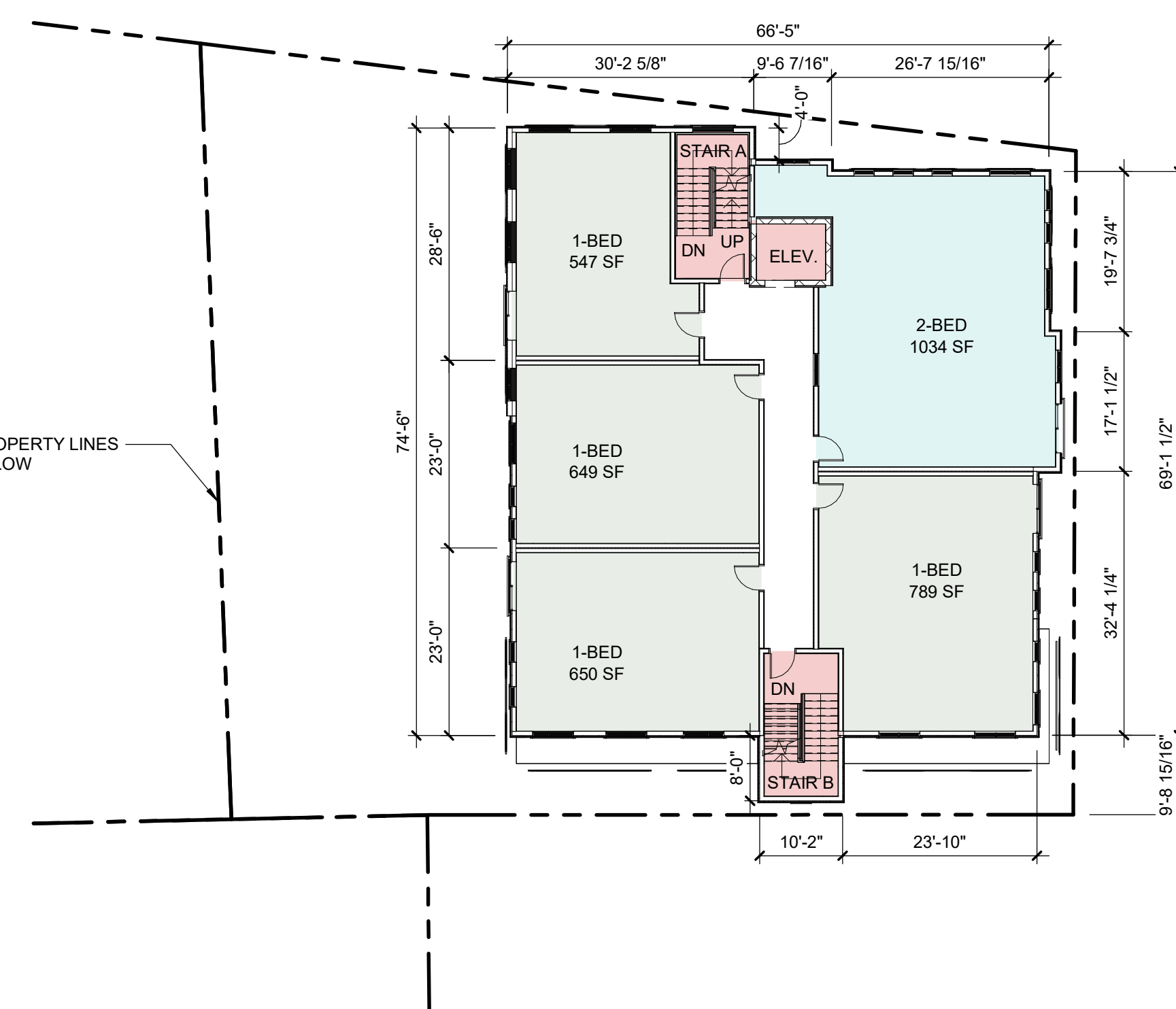
FOURTH FLOOR PLAN
SCALE: 1/16" = 1'-0"



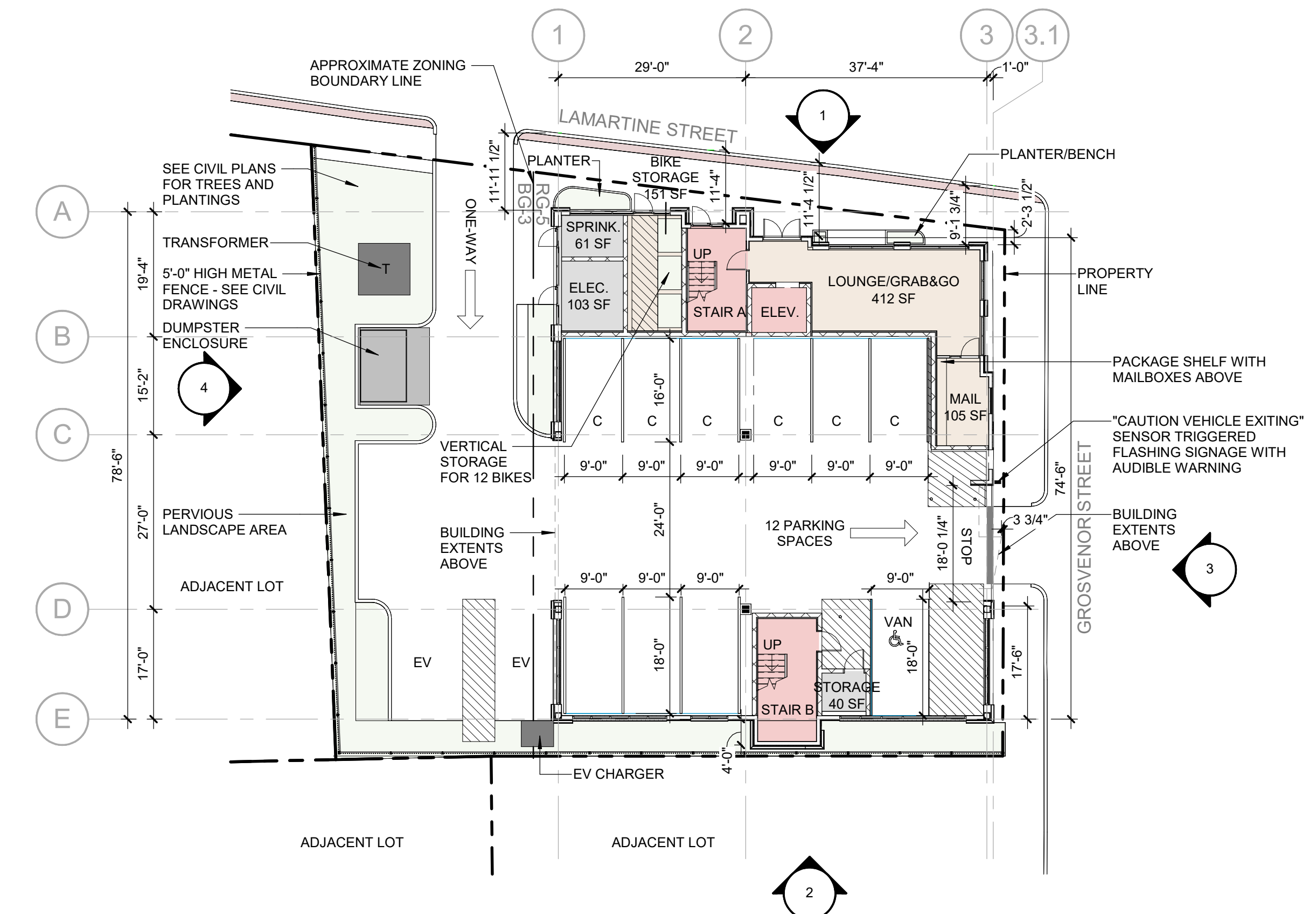
SECOND FLOOR PLAN
SCALE: 1/16" = 1'-0"



ROOF PLAN
SCALE: 1/16" = 1'-0"



THIRD FLOOR PLAN
SCALE: 1/16" = 1'-0"



FIRST FLOOR PLAN
SCALE: 1/16" = 1'-0"

10 GROSVENOR STREET

10 Grosvenor St.
Worcester, MA 01610

FLOOR PLANS

NOVEMBER 18, 2024



SD - WEST 4
SCALE: 1/8" = 1'-0"



SD - SOUTH 2
SCALE: 1/8" = 1'-0"



SD - EAST (GROSVENOR STREET) 3
SCALE: 1/8" = 1'-0"



SD - NORTH (LAMARTINE STREET) 1
SCALE: 1/8" = 1'-0"

10 GROSVENOR STREET

ELEVATIONS

NOVEMBER 18, 2024

10 Grosvenor St.
Worcester, MA 01610

Shaping the Exceptional / 200 Ayer Road / Suite 200 / Harvard, MA 01451 / 978 458 2800

Previous Building Outline
from Previous ZBA
Submission



Existing Building

10 GROSVENOR STREET

ELEVATIONS

NOVEMBER 18, 2024

10 Grosvenor St.
Worcester, MA 01610

Shaping the Exceptional / 200 Ayer Road / Suite 200 / Harvard, MA 01451 / 978 458 2800



00000



10 GROSVENOR STREET

PERSPECTIVES

NOVEMBER 18, 2024

10 Grosvenor St.
Worcester, MA 01610

Shaping the Exceptional / 200 Ayer Road / Suite 200 / Harvard, MA 01451 / 978 458 2800

00000





10 GROSVENOR STREET

PERSPECTIVES

NOVEMBER 18, 2024

10 Grosvenor St.
Worcester, MA 01610

Shaping the Exceptional / 200 Ayer Road / Suite 200 / Harvard, MA 01451 / 978 458 2800



10 GROSVENOR STREET

PERSPECTIVES

NOVEMBER 18, 2024

10 Grosvenor St.
Worcester, MA 01610

Shaping the Exceptional / 200 Ayer Road / Suite 200 / Harvard, MA 01451 / 978 458 2800

00000

